

Engineering Specification

Job Name _____

Contractor _____

Job Location _____

Approval _____

Engineer _____

Contractor's P.O. No. _____

Approval _____

Representative _____

iDROSET™ Series CSD

Calibrated Flow Measurement and Balancing Valve

Sizes: ½" – 1"

Series iDROSET CSD calibrated flow measuring and static balancing valves are designed for hydronic heating and cooling systems. With patented flow measurement technology integrated into the valve, their large easy-to-read flow gauge and hand wheel allow the continuous reading of flow and the setting of flow without tools or additional instrumentation. The iDROSET CSD's ball-type design provides up to a 25:1 turn-down ratio, positive shut-off and hand wheel locking screw to secure adjustment.

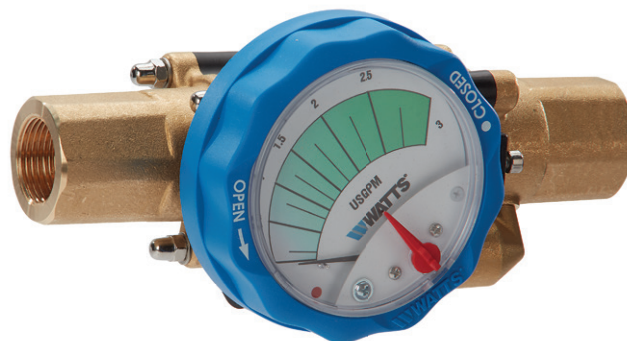
The iDROSET CSD series is available with F-NPT connections from ½" up to 1" with flow rate capability up to 7 GPM.

Features

- Patented integrated flow measurement technology factory calibrated to +/- 10% accuracy
- Large gauge for easy reading of flow
- Lockable, gauge-integrated hand wheel for setting flow
- Ball valve design with positive shutoff
- Balancing turn-down ratio of up to 25:1
- Up to 7 GPM capacity

Applications

- Fan coil units
- Water source heat pumps
- Reheat coils
- Panel coils
- Small branch lines
- Unit heaters
- Unit ventilators
- Finned radiation
- Convectors
- Small pumps



iDROSET CSD

Specifications

A calibrated flow measurement and static balancing valve shall be installed on each hot/chilled water unit or as otherwise shown on plans. The valve shall include integral flow measuring capability factory calibrated to an accuracy standard of +/- 10%, flow indicator gauge with design flow indicator, lockable hand wheel for flow adjustment and positive shut-off capability. The valve shall be a Watts Series iDROSET CSD

NOTICE

The information contained herein is not intended to replace the full product installation and safety information available or the experience of a trained product installer. You are required to thoroughly read all installation instructions and product safety information before beginning the installation of this product.

Watts product specifications in U.S. customary units and metric are approximate and are provided for reference only. For precise measurements, please contact Watts Technical Service. Watts reserves the right to change or modify product design, construction, specifications, or materials without prior notice and without incurring any obligation to make such changes and modifications on Watts products previously or subsequently sold.



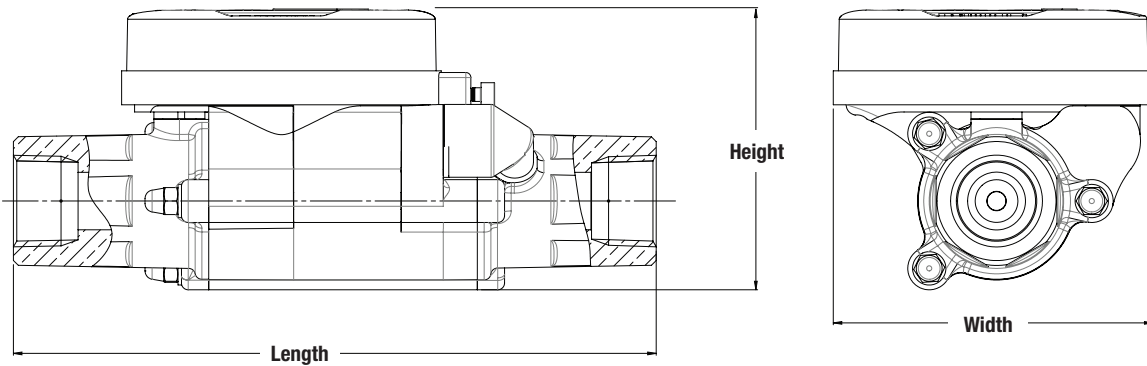
Materials

Central Body	Polyamide with glass fiber
Upper and bottom cap	Brass
Hand wheel	Polyamide with glass fiber
Spring	Stainless Steel
O-Ring	EPDM 70 peroxide

Pressure – Temperature

PATTERN	SIZE	WORKING TEMPERATURE		MAX. WORKING PRESSURE	
		°F	°C	psi	bar
Thread	½" - 1"	230	110	230	16

Dimensions



MODEL	ORDERING CODE	SIZE (F-NPT)	CV	FLOW RANGE (GPM)	DIMENSIONS			WEIGHT (LBS.)
					LENGTH	HEIGHT	WIDTH	
CSD-050	0856700	½"	1.9	0.25 - 3.0	7.2"	3.7"	3.3"	2.6
CSD-075	0856701	¾"	1.9	0.25 - 3.0	7.4"	3.7"	3.3"	2.5
CSD-100	0856702	1"	5.1	0.25 - 7.0	7.5"	3.7"	3.3"	2.4

